



70M PLATFORM SUPPLY/OIL RECOVERY/SAFETY STANDBY VESSEL

BUILT 2017 : PACIFIC OCEAN ENGINEERING & TRADING PTE LTD AT JINJIANG NANYANG SHIPYARD, CHINA

TYPE : ABS + A1 (E) OFFSHORE SUPPORT VESSEL (SUPPLY - HNLS, FFV 1, SSR GR C-(19), OSR-C1, SPS) +AMS, +DPS-2

PRINCIPAL PARTICULARS

YEAR BUILT	2017, CHINA
FLAG	DOHA QATAR
CLASS	ABS
CALL SIGN	D5QX7
IMO	9764881
OWNERS	FIRST OIL & GAS SERVICES

DIMENSIONS

LOA	70 M
LENGTH BP	62.40M
BEAM MOULDED	17M
DEPTH MOULDED	7.20M
DRAFT DESIGNED	5.50M
DRAFT@3000 DDWT	6.00M
DEADWEIGHT	3000MT
GRT	2932MT
NRT	879MT
ENDURANCE	9000 MILES
AUTONOMY	60 DAYS
LT SHIP DISPLACEMENT	2300T
MAX DISPLACEMENT	5327.31T

PROPULSION SYSTEM

MAIN ENGINES	2X NIGATA 6L28HX, 2500PS EACH, 2 X FIXED PITCH AZIMUTH THRUSTERS WITH SHAFTS
SPEED	12.5 KNOTS
BOW THRUSTER	2 X TRAVERSE TUNNEL THRUSTERS, CPPM, 10 TONNES THRUST EACH
PROPELLERS	2 X AZIMUTH Z DRIVE PROPELLERS, FIXED PITCH, WITH KORT NOZZLE—2700mm dia driven by Main Engines

GENERATORS

FUEL CONSUMPTION M/E	
	@100 RPM
	@90 RPM
	@75 RPM

4 X CAT C-32 640 KW EACH DIESEL DRIVEN ALTERNATORS
440V/3/60Hz, 1x99kw-440v/3/60
190.22 IG/HR OR 228.44 USG
171. IG/HR OR 205.44 USG
158.32 IG/HR OR 191.40 USG

CARGO CAPACITIES

CARGO RAILS	10" NB, Sch 80 Pipes longitudinally along the main deck Stanchions at 1800mm apart
CLEAR DECK SPACE	600 M2 (37.5M X 16M)
DECK STRENGTH	7.5 TONS/M2 (
DECK SHEATHING	75mm thick hardwood sheathing
DRILL WATER	15 TANKS - 965 M3
POTABLE WATER	8 TANKS - 617 M3
FUEL OIL	5 TANKS - 758 M3
FOR VESSEL CONSUMPTION	154.8M 3
CARGO FUEL	602.2 M3
BASE OIL	2 TANKS - 145.848 M3
METHANOL	2 TANKS - 167.836 M3
LIQUID MUD/BRINE/REC OIL	8 TANKS - 576 M3
MEG	10 TANKS—740 M3
DRY BULK	4 TANKS - 236M3
M3 IN 4TANKS	2 SEPARATE SYSTEMS FOR LOADING AND DISCHARGE
FOAM TANK	1 TANK - 29 M3
DISPERSANT TANK	1 TANK - 21 M3
SEWAGE	1 TANK - 18 M3
DIRTY OIL	1 TANK - 12.6 M3
BILGE HOLDING TANK	1 TANK -12.6 M3
FO OVER FLOW TANK	1 TANK - 25.36 M3
LUBE OIL	2 TANK - 19 M3
HY OIL	1 TANK - 8.13 M3

CARGO DISCHARGE RATES

CARGO FUEL OIL	1 PUMP 100 M3/Hr @ 80 Mtrs Head
FRESH& DRILL WATER	2 PUMPS each 100M3/Hr@80M head
LIQUID MUD/BRINE	2 PUMPS 75M3/Hr@20 bar—Agitators fitted
BASE OIL	1 PUMP X 100 M3/Hr @ 80 M Head
DRY BULK	2 X 5.6 Bar Working Pressure screw type TWO SEPARATE SYSTEMS FOR LOADING AND DISCHARGE
HANDRAILS & STANCHIONS FO,BO,DW,FW,MUD/BRINE DRY BULK	75 X 9.5 FB X 1000 HIGH CONNECTIONS 4" DN 100 KAMLOCK 5" DN 125 KAMLOCK

ACCOMODATION

6 X 1 BERTH CABINS
4 X 2 BERTH CABINS
9 X 4 BERTH CABINS

TOTAL 50 BUNKS

AIR CONDITIONING

OUTSIDE TEMPARATURE
INSIDE TEMPARATURE
CHILLER/FREEZER ROOM
SHIP OFFICE

FULLY AIR CONDITIONED

55*C @ 95 RH
22*C @ 65 RH
ONE EACH –WALK IN TYPE
WITH DESK, FILLING CABINETS, TELEPHONE, FAX, EMAIL ETC
1 X TREATMENT TABLE ,1 X HOSPITAL BED, WASH ROOM ETC
CONSOLES FITTED FORWARD AND AFT END OF WHEELHOUSE W/ ALL NAVIGATION AND COMMUNICATION EQUIPMENT

HOSPITAL

WHEELHOUSE

MESS ROOMS
RECREATION ROOM
LAUNDRY/CHANGING ROOM

TWO X MESS ROOMS –32 CHAIRS
ONE X RECREATION ROOM
ONE AT MAIN DECK LEVEL WITH WASHING MACHINES, DRYERS, 32 LOCKERS

FIRE FIGHTING

MONITORS

PUMPS

WATER SPRAYING SYSTEM
FOAM SYSTEM

FIFI CLASS 1

2 X REMOTE CONTROLLED MONITORS 1200 M3/EACH
2 X SEAWATER PUMPS 1600 M3/Hr @ 125M Head
FITTED ON ALL DECK LEVELS
FITTED WITH ONE SET OF FOAM MIXER WITH RATIO 1-5%

ANCHORS

2 X AC 14 HHP STOCKLESS ANCHORS, EACH 2295 KG

ANCHOR CABLES

TWO CABLES 330M EACH
GRADE U3 STUD LINK CHAIN CABLES AT PORT AND STARBOARD SIDES

CHAIN STOPPERS

TWO

MOORING LINES

4 X 170 Long mooring ropes min 22tonnes.

ANCHOR WINDLASS

TWO X ELECTRO HYDRAULIC ANCHOR WINDLASS COMPLETE WITH TWO HAWSER DRUMS AND WARPING HEAD, CAPACITY 10 TONNES @ 10M/MIN FOR CHAIN CABLES AND 6 TONNES AT 15M/MIN AND AT LIGHT LOADS 30 M/MIN FOR MOORING LINES

DECK EQUIPMENT

CAPSTANS

TWO X 5 T EACH

TUGGER WINCH

TWO X 10 TONNES SWL@12 M/MIN

PROVISION CRANE

ONE X ELECTRO HYDRAULIC SINGLE ARM CRANE 5TONS SWL@ 10M RADIUS

FLOOD LIGHTS

SIX X 1000 W, 2 FORWARD AND 4 AFT + 8 X 400 W

SEARCH LIGHT

THREE X 3000 + ONE X 1000W C/W UNDERDECK CONTROLS

FENDERS

D Type rubber fenders 300 x 300 fitted at shipside.

SCRAMBLING NETS

ONE EACH ON EITHER SIDES

DYNAMIC POSITIONING SYSTEM

DPS 2 NOTATION SYSTEM FITTED
INDEPENDENT JOYSTIC SYSTEM
FITTED

DUPLEX DP WORKSTATION WITH TWO
CONTROL AND FIELD CABINET

VRU or MRU to DP2 REQUIREMENT

TWO X UPS

ONE X PRINTER

ONE X LAPTOP PC

ONE CHANGEOVER SWITCH (DP/IJS/
MANUAL CONTROL)

THE SYSTEM SHALL HAVE INTERFACE
WITH DGPS, GYROCOMPASS,
WIND TRACKER, VRU, UPS PRINTER ETC

LIFE SAVING EQUIPMENT

LIFE RAFTS 6 X 25 MEN, 8 X LIFE BUOYS, 50
LIFE JACKETS, PYROTECHNICS

ROPE LADDERS 2 X EMBARKATION ROPE LADDERS

RESCUE BOAT TWO- 1 X 15 PERSONS FRC 20
KNOTS MIN SPEED WITH LAUNCH-
ING DAVIT

RESCUE BASKET

RESCUE ZONES WITH BULWARK GATES 2M WIDTH
AND 5M LENGTH

HOSPITAL 1 X TREATMENT TABLE
1 X HOSPITAL TYPE BED
WASH ROOM ETC

POLLUTION CONTROL

EQUIPMENT

DISPERSANT SYSTEM SPRAY NOZZLE SYSTEM COMPLETE
WITH PROPORTIONATING METERING
VALVE 0-10%

SPILL CONTROL HEAVY DUTY OIL SPILL CONTROL
BARRIER OF 200M LENGTH STORED
ON FORECASTLE DECK, OIL SKIMMER
CAPACITY 8M3/Hr

DISPERSANT BOOMS TWO X 6M EACH , DISPERSANT PUMP-
25 M3/Hr @ 30M Head

REEFER PLUGS 2 x 440 v and 2 x 220 v FITTED

FLOW METERS FITTED FOR FUEL AND WATER

NAVIGATION AND COMMUNICATION EQUIPMENT

MAGNETIC COMPASS - One x Reflector Type, complete
with Periscope reading, Azimuth Mirror and internal illu-
mination light.

AUTOPILOT- 1 x Simrad Robertson AP 9 MK 3

GYROCOMPASS - 3 x Simrad RGC 80 with Forward and
Aft Repeaters

RADARS - Two x X Band and S Band with Day Light Dis-
play Colour, one of which Gyro stabilized and fitted with
Automatic Electronic Plotting facility

ECHO SOUNDER - One x Furuno FE 700

SPEED LOG - One x Furuno Doppler Range 10 – 45 Knots

FLOOD LIGHTS Six x 1000 W, 2 forward and 4 aft+ 8 x
400 W + 4 x 50W DC 24 v

SEARCH LIGHTS FOUR x 3000 W Halogen,+ ONE X
1000W

DGPS One x Furuno GP 90 D + Two for DP System

CYSCAN- One

AIS One x Mc Murdoc Model M 2-
Gyro and GPS interfaced.

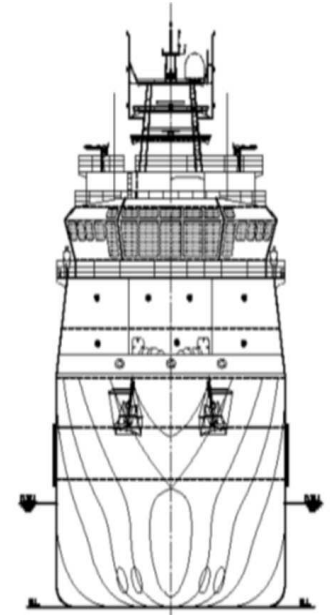
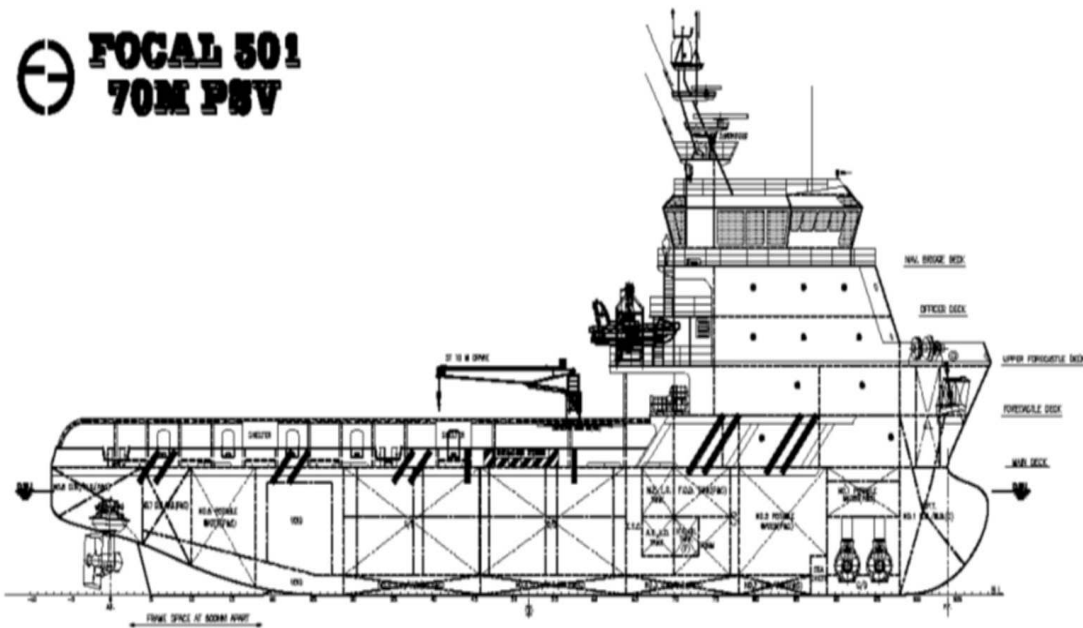
WEATHER FAX One x Furuno FAX 207

NAVIGATION AND COMMUNICATION EQUIPMENT

GMDSS	Fitted for A1, A2 and a3
DOPPLER SPEED LOG	One @ Forward Console
HORN	One
HELICOPTER COMMUNICATION EQUIPMENT	One x Airband VHF Transceiver.
BNWAS	Fitted
Navtex Receiver	Fitted
SSAS	One
SART	Two
PA system	One x 240 V 60 Hz, Amplifier
SHORE CONNECTION	One x 440 V 60 Hz, 200 amp
Electronic Chart Display and Information System	
NAVMASTER 800.	
VHF	-1 x 25 W 220/1/60& 24 V DC with DSC and ITU Channels,
Remote handsets	Two
VHF Watch Receiver with DSC Decoder-	Two
VHF Hand held Transceivers waterproof	3 X 2 way
1 x Navtex Receiver	
1 x Inmarsat C SES Satellite System	Satellite EPIRB, Integrated Telephone /
Command System 1 Exchange,	36 Lines
CLEAR VIEW SCREENS	Two Sets
RADAR TRANSPONDERS	Two
GAS DETECTORS	Two x LEL, CO, O, and 5 Stations on deck for Fixed Gas Detection System with 5 Monitors Audio and Visible.

FOG 12 GENERAL ARRANGEMENT

FOCAL 501
70M PSV

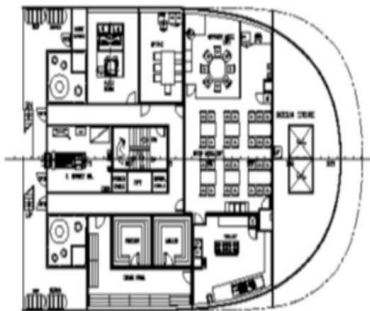


OUTBOARD PROFILE

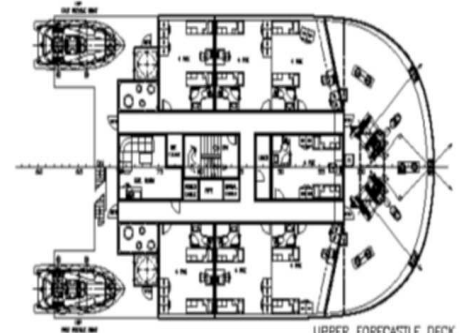
FRONT VIEW

PRINCIPAL PARTICULARS

LENGTH OA	70.00 M	C.F.O.(INCL. BASE OIL)	390 M ³
LENGTH BP	62.40 M	F.O.	370 M ³
BEAM MLD.	17.00 M	BASE OIL	110 M ³
DEPTH MLD.	7.20 M	POTABLE WATER	470 M ³
DRAFT DESIGNED	5.50 M	MUD/BRINE/REC.OIL	500 M ³
DRAFT SCANTLING	6.00 M	DRY BULK	230 M ³
COMPLEMENT	80 MEN	METHANOL	150 M ³
MAIN ENGINE	2,500 PS X 2	MEG	650 M ³
SPEED	ABT. 12.5 KTS	D.W./W.B.	900 M ³
MAX DEADWEIGHT	ABT. 3,000 T	DECK CARGO SPACE	600 M ²

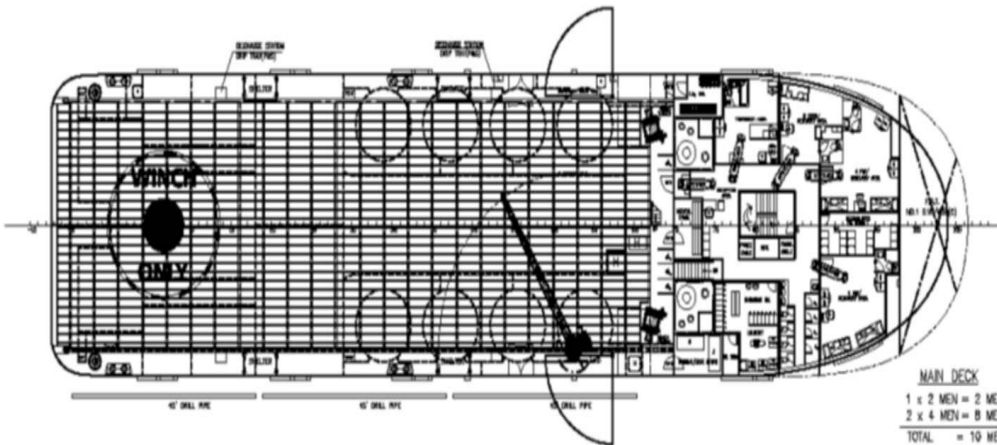


FORECASTLE DECK



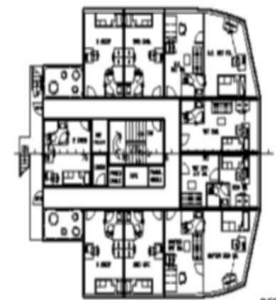
UPPER FORECASTLE DECK

7 x 4 MEN = 28 MEN
TOTAL = 28 MEN



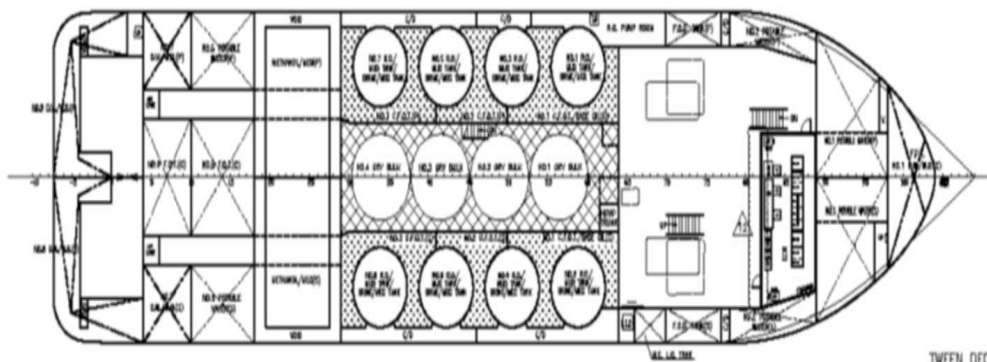
MAIN DECK

1 x 2 MEN = 2 MEN
2 x 4 MEN = 8 MEN
TOTAL = 10 MEN

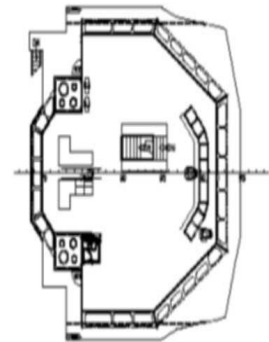


OFFICER DECK

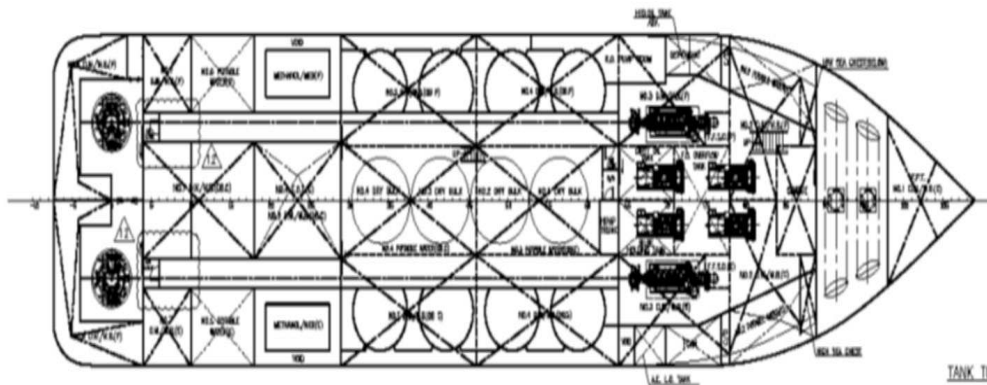
3 x 2 MEN = 6 MEN
6 x 1 MEN = 6 MEN
TOTAL = 12 MEN



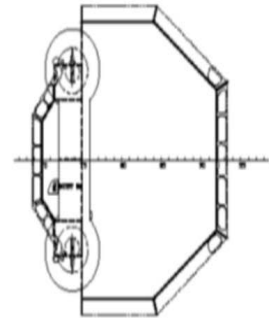
TWEEN DECK



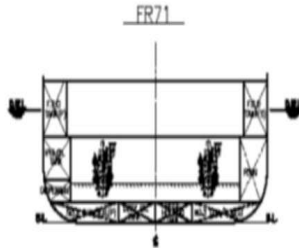
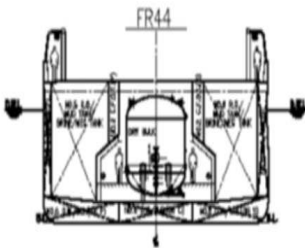
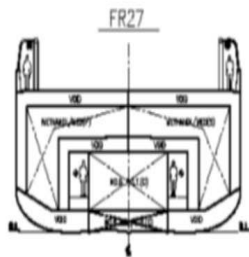
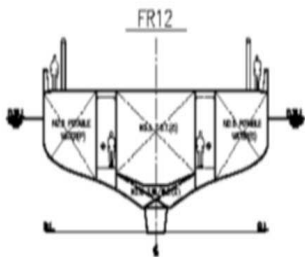
NWY BRIDGE DECK



TANK TOP



COMPASS DECK



CLASS: ABS A1 (1) OFFSHORE SUPPORT VESSEL
 (SUPPLY-HULL,
 FFV 1,
 SSR OR C-(19),
 OSR-(1),
 SPQ) (1)
 ● AMS
 ● OPS-2

THE OCCUPANT AND THE CONTENT ARE COPYRIGHT AND REMAIN PROPERTY OF FOCAL MARINE & OFFSHORE. THEY MUST NOT BE COPIED IN WHOLE OR IN PART TO ANY THIRD PARTY FOR ANY PURPOSE WITHOUT PRIOR WRITTEN PERMISSION FROM FOCAL MARINE & OFFSHORE. THE RECEIPT OF THIS DOCUMENT IMPLIES ACCEPTANCE OF THIS CONDITION.

12	AMENDED AS PER ABS & OWNER COMMENTS	ZF	APR-04-2014
REV NO.	REVISION DESCRIPTION	BY	DATE
OWNER			
BUILDER			
POET SHIPBUILDING & ENGINEERING PTE LTD		HULL NO. POET 1384/1385	
PROJECT			
70M PLATFORM SUPPLY / OIL RECOVERY / SAFETY STANDBY VESSEL "FOCAL 501"			
APPROVE	ENG TITLE	JOB NO.	P-1806
VERIFIER	GENERAL ARRANGEMENT	DWG NO.	P-1606-001
CHECKER		SCALE :	1:200(A1)
DRAWER		F.R.F	CLASS :
FOCAL MARINE & OFFSHORE EMAIL: info@focmarine.com		SINGAPORE TEL: 65-65481387	
		SHANGHAI TEL: 86-21-58700788 FAX: 86-21-58313265	



First Oil & Gas Services W.L.L

Al Hitmi Village, #7, 5TH Floor

Corniche road,

Mogolina, Doha, Qatar

PO BOX: 22342

email: info@firstoilandgas.com

Office: 44313713 / Fax: 44317810

www.firstoilandgas.com