



70M PLATFORM SUPPLY/OIL RECOVERY/SAFETY STANDBY VESSEL

BUILT 2015 : PACIFIC OCEAN ENGINEERING & TRADING PTE LTD AT JINHJIANG NANYANG SHIPYARD, CHINA

TYPE : ABS + A1 (E) OFFSHORE SUPPORT VESSEL (SUPPLY - HNLS, FFV 1, SSR GR C-(19), OSR-C1, SPS) +AMS, +DPS-2

PRINCIPAL PARTICULARS

YEAR BUILT	2015, CHINA
FLAG	DOHA, QATAR
CLASS	ABS
CALL SIGN	D5OE6
IMO	9743708
OWNERS	FIRST OIL & GAS SERVICES

DIMENSIONS

LOA	70 M
LENGTH BP	62.40M
BEAM MOULDED	17M
DEPTH MOULDED	7.20M
DRAFT DESIGNED	5.50M
DRAFT@3000 DDWT	6.00M
LIGHT SHIP DISPLACEMENT	2294.68T
TOTAL DISPLACEMENT	5327.31T
DEADWEIGHT	3000MT
GRT	2932MT
NRT	879MT
ENDURANCE	9000 MILES
AUTONOMY	60 DAYS

PROPULSION SYSTEM

MAIN ENGINES	2X NIGATA 6L28HX, 2500PS EACH, 2 X FIXED PITCH AZI- MUTH THRUSTERS WTH SHAFTS
SPEED	12.5 KNOTS
BOW THRUSTER	2 X TRAVERSE TUNNEL THRUSTERS, CPPM , 10 TONNES THRUST EACH
PROPELLERS	2 X AZIMUTH Z DRIVE PRO- PELLERS, FIXED PITCH, WITH KORT NOZZLE—2700mm dia driven by Main Engines
SEWAGE TREATMENT PLANT	FITTED FOR 50 PERSONS
OILY WATER SEPARATOR	FITTED. CAPACITY 1M3.Hr w/ oil content less than15ppm

GENERATORS	4 X 640 KW EACH DIESEL DRIVEN ALTERNATORS 440V/3/60Hz, 1x99kw -440v/3/60
------------	--

FRESH WATER MAKER	1 X REVERSE OSMOSIS WATER MAK- ER-25 TONS/DAY
-------------------	--

CONSUMPTION	ABOUT 194 g/KW-Hr
-------------	-------------------

CARGO CAPACITIES

CARGO RAILS	10" NB, Sch 80 Pipes longitudinally along the main deck Stanchions at 1800mm apart
-------------	--

CLEAR DECK SPACE	600 M2
DECK LOAD	7.5 TONS/M2
DECK SHEATHING	75mm thick hardwood sheathing
DRILL WATER	15 TANKS - 965 M3
POTABLE WATER	8 TANKS - 617 M3
FUEL OIL	5 TANKS - 772 M3

BASE OIL	2 TANKS - 145.848 M3
METHANOL	2 TANKS - 167.836 M3
LIQUID MUD/BRINE/REC OIL	8 TANKS - 576 M3

MEG	10 TANKS—740 M3
DRY BULK	4 TANKS - 236M3
M3 IN 4TANKS	2 SEPARATE SYSTEMS FOR LOADING AND DISCHARGE

FOAM TANK	1 TANK - 29 M3
-----------	----------------

DISPERSANT TANK	1 TANK - 21 M3
-----------------	----------------

SEWAGE	1 TANK - 18 M3
--------	----------------

DIRTY OIL	1 TANK - 12.6 M3
-----------	------------------

BILGE HOLDING TANK	1 TANK -12.6 M3
--------------------	-----------------

FO OVER FLOW TANK	1 TANK - 25.36 M3
-------------------	-------------------

LUBE OIL	2 TANK - 19 M3
----------	----------------

HY OIL	1 TANK - 8.13 M3
--------	------------------

CARGO DISCHARGE RATES

CARGO FUEL OIL	1 PUMP 100 M3/Hr @ 80 Mtrs Head
FRESH& DRILL WATER	2 PUMPS each 100M3/Hr@80M head
LIQUID MUD/BRINE	2 PUMPS 75M3/Hr@20 bar—Agitators fitted
BASE OIL	1 PUMP X 100 M3/Hr @ 80 M Head
DRY BULK	2 X 5.6 Bar Working Pressure screw type TWO SEPARATE SYSTEMS FOR LOADING AND DISCHARGE
HANDRAILS & STANCHIONS FO,BO,DW,FW,MUD/BRINE DRY BULK	75 X 9.5 FB X 1000 HIGH CONNECTIONS 4" DN 100 KAMLOCK 5" DN 125 KAMLOCK

ACCOMODATION

6 X 1 BERTH CABINS
4 X 2 BERTH CABINS
9 X 4 BERTH CABINS

TOTAL 50 BUNKS

AIR CONDITIONING

OUTSIDE TEMPARATURE	55*C @ 95 RH
INSIDE TEMPARATURE	22*C @ 65 RH
CHILLER/FREEZER ROOM	ONE EACH –WALK IN TYPE WITH DESK, FILLING CABINETS, TELEPHONE, FAX, EMAIL ETC
SHIP OFFICE	1 X TREATMENT TABLE ,1 X HOSPITAL BED, WASH ROOM ETC
HOSPITAL	CONSOLES FITTED FORWARD AND AFT END OF WHEELHOUSE W/ ALL NAVIGATION AND COMMUNICATION EQUIPMENT
WHEELHOUSE	TWO X MESS ROOMS –32 CHAIRS ONE X RECREATION ROOM ONE AT MAIN DECK LEVEL WITH WASHING MACHINES, DRYERS, 32 LOCKERS
MESS ROOMS	
RECREATION ROOM	
LAUNDRY/CHANGING ROOM	

FIRE FIGHTING

MONITORS	2 X REMOTE CONTROLLED MONITORS 1200 M3/EACH
PUMPS	2 X SEAWATER PUMPS 1600 M3/Hr @ 125M Head
WATER SPRAYING SYSTEM	FITTED ON ALL DECK LEVELS
FOAM SYSTEM	FITTED WITH ONE SET OF FOAM MIXER WITH RATIO 1-5%

FIFI CLASS 1

ANCHORS

2 X AC 14 HHP STOCKLESS ANCHORS, EACH 2295 KG

ANCHOR CABLES	TWO CABLES 330M EACH GRADE U3 STUD LINK CHAIN CABLES AT PORT AND STARBOARD SIDES
CHAIN STOPPERS	TWO
MOORING LINES	4 X 170 Long mooring ropes min 22tonnes.
ANCHOR WINDLASS	TWO X ELECTRO HYDRAULIC ANCHOR WINDLASS COMPLETE WITH TWO HAWSER DRUMS AND WARPING HEAD, CAPACITY 10 TONNES @ 10M/MIN FOR CHAIN CABLES AND 6 TONNES AT 15M/MIN AND AT LIGHT LOADS 30 M/MIN FOR MOORING LINES

DECK EQUIPMENT

CAPSTANS	TWO X 5 T EACH
TUGGER WINCH	TWO X 10 TONNES SWL@12 M/MIN
PROVISION CRANE	ONE X ELECTRO HYDRAULIC SINGLE ARM CRANE 5TONS SWL@ 10M RADIUS
FLOOD LIGHTS	SIX X 1000 W, 2 FORWARD AND 4 AFT + 8 X 400 W
SEARCH LIGHT	THREE X 3000 + ONE X 1000W C/W UNDERDECK CONTROLS
FENDERS	D Type rubber fenders 300 x 300 fitted at shipside.
SCRAMBLING NETS	ONE EACH ON EITHER SIDES

DYNAMIC POSITIONING SYSTEM

DPS 2 NOTATION SYSTEM FITTED
INDEPENDENT JOYSTIC SYSTEM
FITTED

DUPLEX DP WORKSTATION WITH TWO
CONTROL AND FIELD CABINET

VRU or MRU to DP2 REQUIREMENT

TWO X UPS

ONE X PRINTER

ONE X LAPTOP PC

ONE CHANGEOVER SWITCH (DP/IJS/
MANUAL CONTROL)

THE SYSTEM SHALL HAVE INTERFACE
WITH DGPS, GYROCOMPASS,
WIND TRACKER, VRU, UPS PRINTER ETC

LIFE SAVING EQUIPMENT

LIFE RAFTS

ROPE LADDERS

RESCUE BOAT

RESCUE BASKET

RESCUE ZONES

HOSPITAL

DP REFERENCE SYSTEM

2 X DGPS

1 X MINI RADASCAN

1 X CYSCAN

6 X 25 MEN, 8 X LIFE BUOYS, 50
LIFE JACKETS, PYROTECHNICS

2 X EMBARKATION ROPE LADDERS

TWO- 1 X 15 PERSONS FRC 20
KNOTS MIN SPEED WITH LAUNCH-
ING DAVIT

WITH BULWARK GATES 2M WIDTH
AND 5M LENGTH

1 X TREATMENT TABLE
1 X HOSPITAL TYPE BED

WASH ROOM ETC

POLLUTION CONTROL**EQUIPMENT**

DISPERSANT SYSTEM

SPILL CONTROL

DISPERSANT BOOMS

REEFER PLUGS

FLOW METERS

SPRAY NOZZLE SYSTEM COMPLETE
WITH PROPORTIONATING METERING
VALVE 0-10%

HEAVY DUTY OIL SPILL CONTROL
BARRIER OF 200M LENGTH STORED
ON FORECASTLE DECK, OIL SKIMMER
CAPACITY 8M3/Hr

TWO X 6M EACH , DISPERSANT PUMP-
25 M3/Hr @ 30M Head

2 x 440 v and 2 x 220 v FITTED

FITTED FOR FUEL AND WATER

NAVIGATION AND COMMUNICATION EQUIPMENT

MAGNETIC COMPASS - One x Reflector Type, complete
with Periscope reading, Azimuth Mirror and internal illu-
mination light.

AUTOPILOT- 1 x Simrad Robertson AP 9 MK 3

GYROCOMPASS - 3 x Simrad RGC 80 with Forward and
Aft Repeaters

RADARS - Two x X Band and S Band with Day Light Dis-
play Colour, one of which Gyro stabilized and fitted with
Automatic Electronic Plotting facility

ECHO SOUNDER - One x Furuno FE 700

SPEED LOG - One x Furuno Doppler Range 10 – 45 Knots

FLOOD LIGHTS Six x 1000 W, 2 forward and 4 aft+ 8 x
400 W + 4 x 50W DC 24 v

SEARCH LIGHTS FOUR x 3000 W Halogen,+ ONE X
1000W

DGPS One x Furuno GP 90 D + Two for DP System

CYSCAN- One

AIS One x Mc Murdoc Model M 2-
Gyro and GPS interfaced.

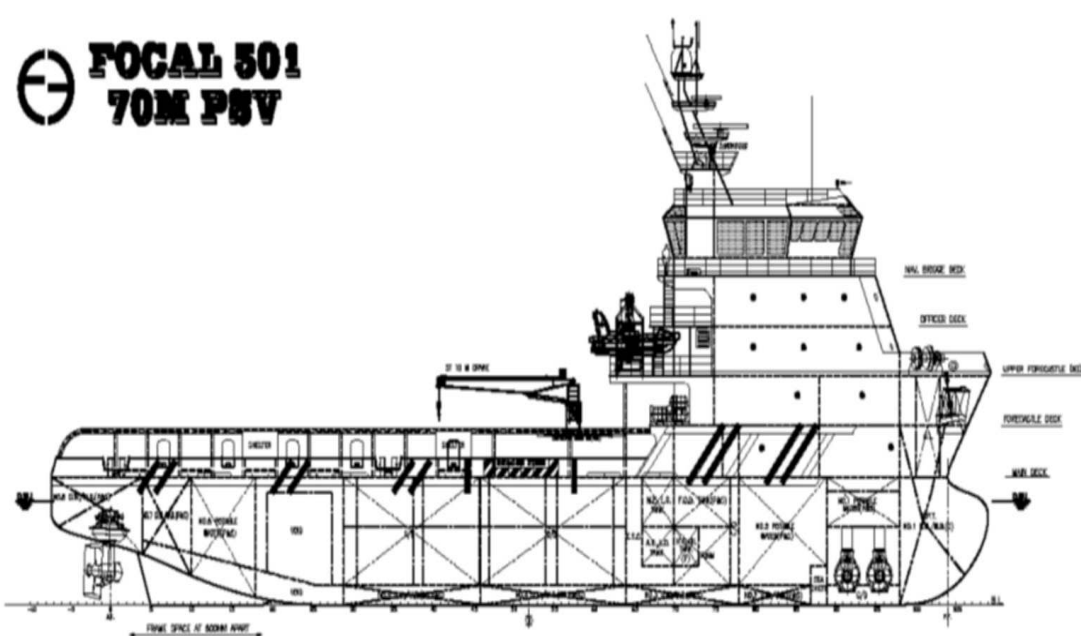
WEATHER FAX One x Furuno FAX 207

NAVIGATION AND COMMUNICATION EQUIPMENT

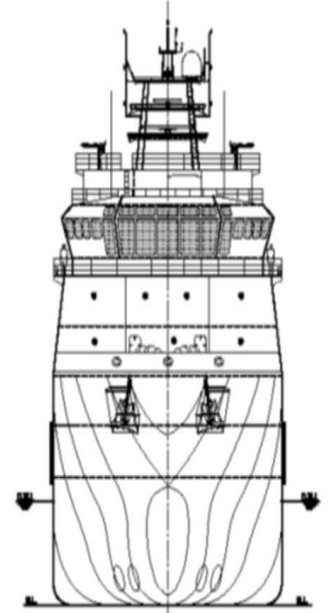
GMDSS	Fitted for A1, A2 and a3
DOPPLER SPEED LOG	One @ Forward Console
HORN	One
HELICOPTER COMMUNICATION EQUIPMENT	One x Airband VHF Transceiver.
BNWAS	Fitted
Navtex Receiver	Fitted
SSAS	One
SART	Two
PA system	One x 240 V 60 Hz, Amplifier
SHORE CONNECTION	One x 440 V 60 Hz, 200 amp
Electronic Chart Display and Information System	
NAVMASTER 800.	
VHF	-1 x 25 W 220/1/60& 24 V DC with DSC and ITU Channels,
Remote handsets	Two
VHF Watch Receiver with DSC Decoder-	Two
VHF Hand held Transceivers waterproof	3 X 2 way
1 x Navtex Receiver	
1 x Inmarsat C SES Satellite System	Satellite EPIRB, Integrated Telephone /
Command System 1 Exchange,	36 Lines
CLEAR VIEW SCREENS	Two Sets
RADAR TRANSPONDERS	Two
GAS DETECTORS	Two x LEL, CO, O, and 5 Stations on deck for Fixed Gas Detection System with 5 Monitors Audio and Visible.

FOG 11 GENERAL ARRANGEMENT

FOCAL 501 70M PSV



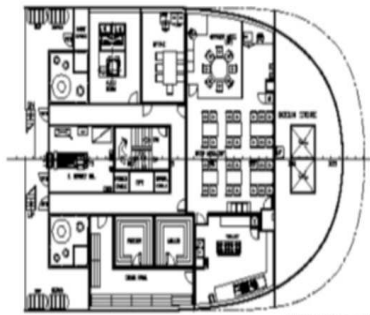
OUTBOARD PROFILE



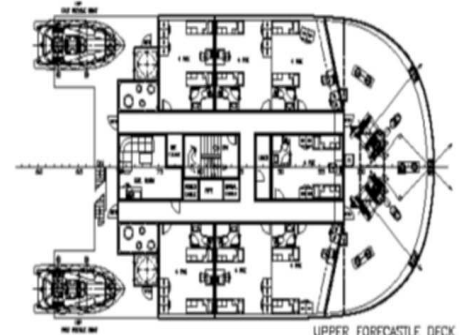
FRONT VIEW

PRINCIPAL PARTICULARS

LENGTH OA	70.00 M	C.F.O.(INCL. BASE OIL)	390 M ³
LENGTH BP	62.40 M	F.D.	370 M ³
BEAM MLD.	17.00 M	BASE OIL	110 M ³
DEPTH MLD.	7.20 M	POTABLE WATER	470 M ³
DRAFT DESIGNED	5.50 M	MUD/BRINE/REC.OIL	500 M ³
DRAFT SCANTLING	6.00 M	DRY BULK	230 M ³
COMPLEMENT	80 MEN	METHANOL	150 M ³
MAIN ENGINE	2,500 PS X 2	MEG	650 M ³
SPEED	ABT. 12.5 KTS	D.W./W.B.	900 M ³
MAX DEADWEIGHT	ABT. 3,000 T	DECK CARGO SPACE	600 M ²

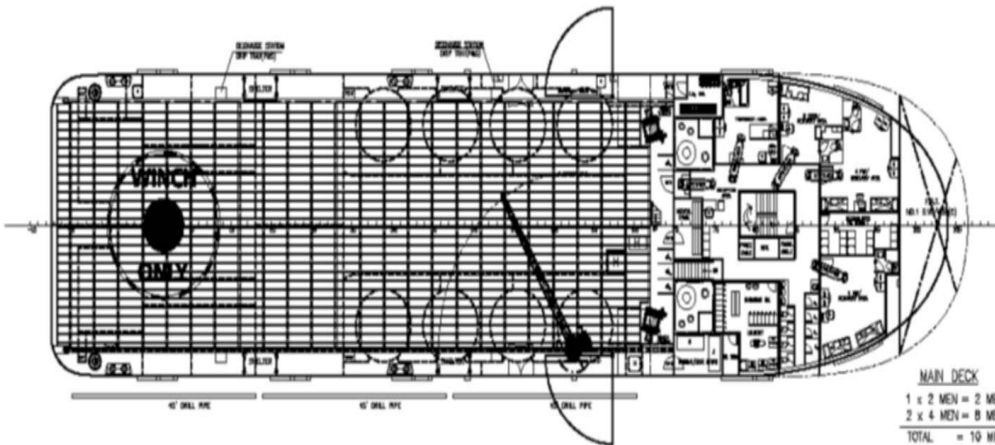


FORECASTLE DECK



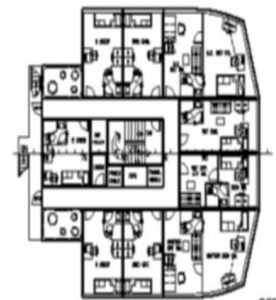
UPPER FORECASTLE DECK

7 x 4 MEN = 28 MEN
TOTAL = 28 MEN



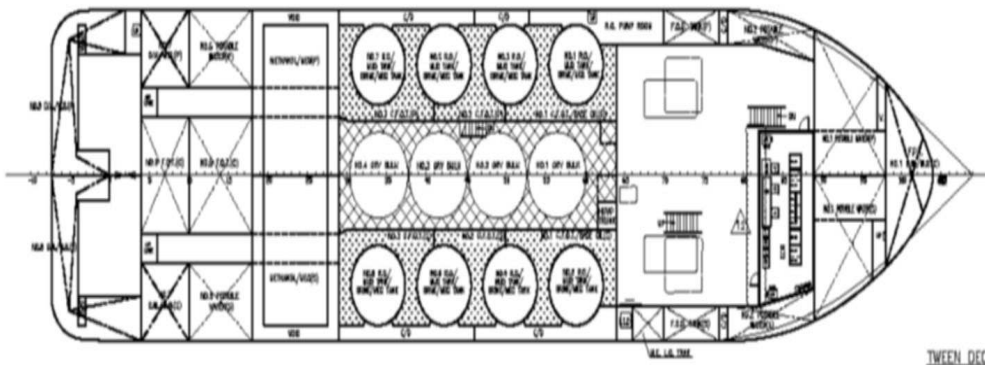
MAIN DECK

1 x 2 MEN = 2 MEN
2 x 4 MEN = 8 MEN
TOTAL = 10 MEN

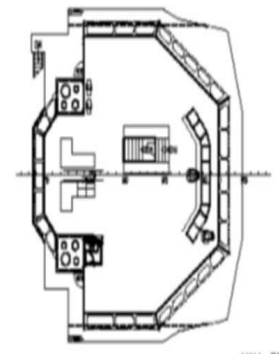


OFFICER DECK

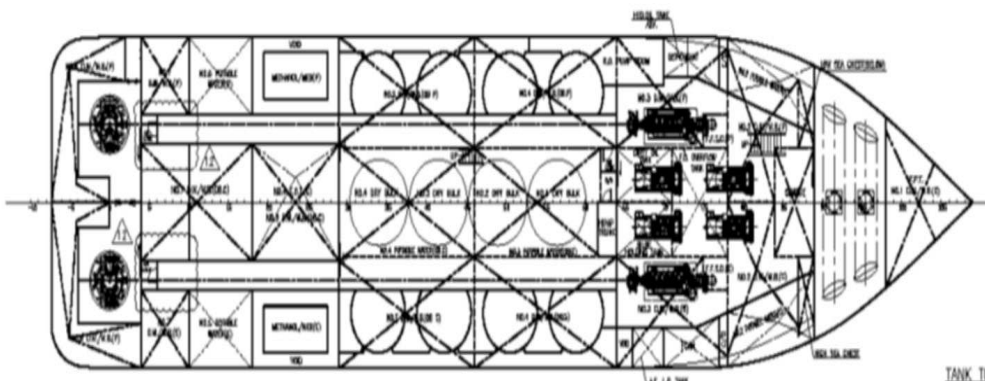
3 x 2 MEN = 6 MEN
6 x 1 MEN = 6 MEN
TOTAL = 12 MEN



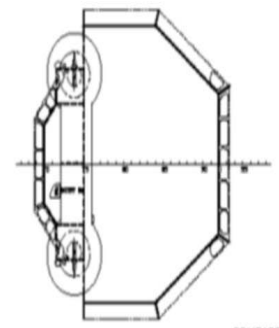
TWEEN DECK



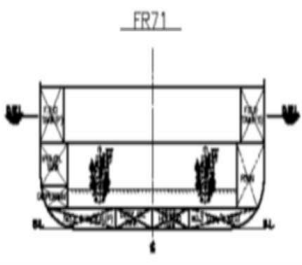
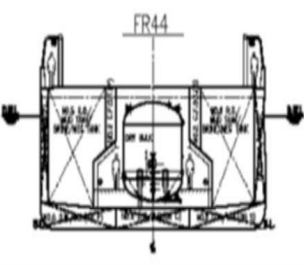
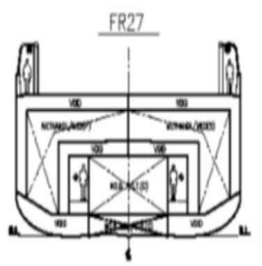
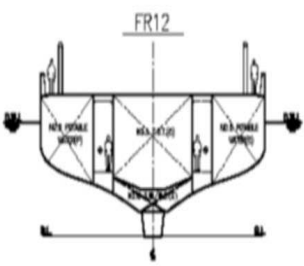
NWY BRIDGE DECK



TANK TOP



COMPASS DECK



CLASS: ABS A1 (1) OFFSHORE SUPPORT VESSEL
 (SUPPLY-HULL,
 FFV 1,
 SSR OR C-(19),
 OSR-(1),
 SPB) (2)

AMS
 DPS-2

THE OCCUPANT AND THE CONTENT ARE COPYRIGHT AND REMAIN PROPERTY OF FOCAL MARINE & OFFSHORE. THEY MUST NOT BE COPIED IN WHOLE OR IN PART TO ANY THIRD PARTY FOR ANY PURPOSE WITHOUT PRIOR WRITTEN PERMISSION FROM FOCAL MARINE & OFFSHORE. THE RECEIPT OF THIS DOCUMENT IMPLIES ACCEPTANCE OF THIS CONDITION.

12	AMENDED AS PER ABS & OWNER COMMENTS	ZF	APR-04-2014
REV. NO.	REVISION DESCRIPTION	BY	DATE
OWNER			
BUILDER POET SHIPBUILDING & ENGINEERING PTE LTD HALL NO. POET 1584/1585			
PROJECT 70M PLATFORM SUPPLY / OIL RECOVERY / SAFETY STANDBY VESSEL "FOCAL 501"			
APPROVE	ENGINE TITLE	JOB NO.	P-1806
VERIFIER	GENERAL ARRANGEMENT	DRWG NO.	P-1606-001
CHECKER		SCALE	1:200(A1)
DRAWER		F.R.F	CLASS
 FOCAL MARINE & OFFSHORE EMAIL: info@focalmarine.com SHANGHAI TEL: 86-21-58700788 SINGAPORE TEL: 65-68481387 FAX: 86-21-58313265 FAX: 65-68481391			



First Oil & Gas Services W.L.L
Al Hitmi Village, #7, 5TH Floor
Corniche road,
Mogolina, Doha, Qatar
PO BOX: 22342

email: info@firstoilandgas.com

Office: 44313713 / Fax: 44317810

www.firstoilandgas.com